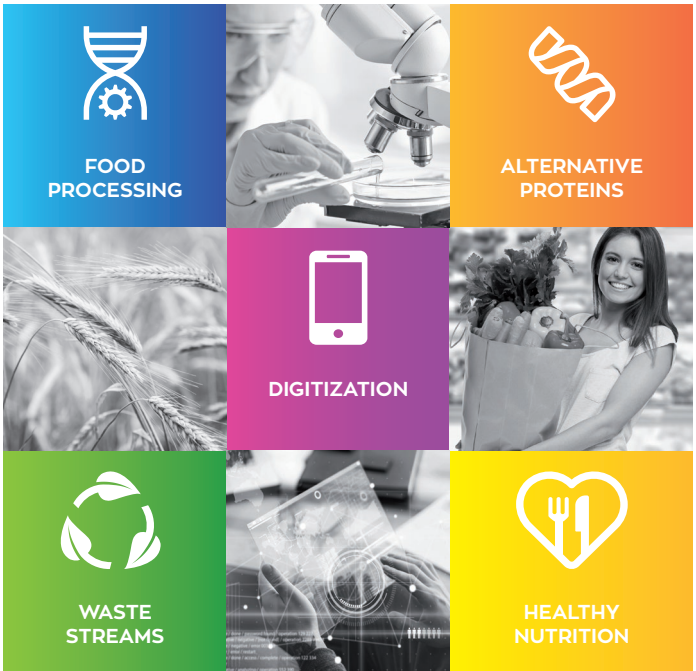




STATE INITIATIVE FOR FOOD INDUSTRY LOWER SAXONY

Your state initiative
with a competent network



OUR CONTRIBUTION

The food industry in Lower Saxony is one of the most important economic sectors and makes Lower Saxony the number one agricultural state in Germany. The food industry is characterized by very heterogeneous structures and a large number of small and medium-sized enterprises form the basis of this important economic sector. By actively networking with business, research, politics, and society, LI Food supports the industry in the challenges in the five fields of action. Individual actors are promoted and targeted innovations are driven forward through various measures.

In addition to the fields of action, the work of LI Food is shaped by the three new cross-sectional themes, which form the basis of all fields of action. Technical progress must constantly be measured against ecological and social expectations, requiring the examination of social acceptance as well.



YOUR STATE INITIATIVE WITH A COMPETENT NETWORK!

The State Initiative for the Food Industry, with its headquarters at the DIL German Institute for Food Technology e. V. and the Seedhouse Accelerator in Os-nabrück as partners, brings together competencies and know-how in all areas of the food industry for all of Lower Saxony.

The State Initiative sees itself as a cross-sectoral and technology-spanning competence network with a strong focus on market and application.

The goal is to mobilize and tap into Lower Saxony's innovation potential for economic, ecological, and socially sustainable development.

The central tasks of the State Initiative are:

- Initiating and accompanying innovation projects
- Establishing and maintaining cooperation relationships
- Network building
- Public relations work
- Supporting the client (Lower Saxony Ministry of Economics, Employment, and Transportation)

CROSS-SECTIONAL THEMES

Sustainability Through Innovation

Sustainable business practices are a core element that affects all fields of action of LI Food. In production, there are various potentials to make the value chain more resource-efficient and environmentally sustainable. In this way, innovative developments can contribute to minimizing the CO₂ footprint of the entire food system. Sustainability is therefore increasingly seen as a driving force for innovations in the food industry and at the same time an influential factor in consumers' purchasing decisions.

Social Acceptance of Technical Innovation

Examining social acceptance is a crucial step in explaining potential market penetration and gaining insights that can be a decisive advantage for future innovations. The insights gained are valuable in identifying optimization potential in development. The studies and the resulting recommendations are intended to help tap the full market potential of new technologies.

Entrepreneurship

LI Food focuses on innovation as a driver for transformations in the food system. Start-ups can be an important driving force for new ways in the industry. LI Food supports the food start-up ecosystem in Lower Saxony and aims to improve the framework conditions for entrepreneurs. In collaboration with various start-up support centers, particularly the Seedhouse Accelerator, the LI Food team promotes the networking of start-ups and companies. The goal is also to encourage development within companies (intrapreneurship) to make companies fit for future developments.

SUSTAINABILITY THROUGH INNOVATION

ENTREPRENEURSHIP

SOCIAL ACCEPTANCE
OF TECHNICAL INNOVATION



FOOD PROCESSING

The ongoing change in nutrition continues to create the need for new innovations in the food industry to produce healthy, high-quality and safe foods. In this context, technologies for processing alternative proteins and other raw materials play a crucial role.

The LI Food supports industrial companies in overcoming challenges and questions using current food technology research results with reference to technological innovations.

OUR FOCUS THEMES:

- Biologization/biotechnology
- Food safety
- Quality management
- New methods and technologies
- Product development



WASTE STREAMS

Achieving resource efficiency is a continuous process. It is necessary to examine by-products for their nutrient potential in order to exploit resources for the development of high-quality foods.

The LI Food wants to drive the development of innovative biotechnological and physical processes necessary for the upgrading of by-products through cooperation in its extensive network. This also includes capturing the by-products of the Lower Saxony agriculture and making them visible.

OUR FOCUS THEMES:

- Identifying and quantifying by-products
- Extraction processes
- Life cycle analysis (LCA)
- Functionalization
- Developing regional value chains

SUSTAINABILITY THROUGH INNOVATION

ENTREPRENEURSHIP

SOCIAL ACCEPTANCE
OF TECHNICAL INNOVATION



DIGITIZATION

As digitization progresses, the food industry offers new opportunities for process optimization to increase productivity and food quality. In addition, the entire value chain can be digitally recorded to ensure the essential and seamless traceability of processed raw materials.

The LI Food wants to develop innovative and practical ideas with companies to establish a transparent and productive value chain.

OUR FOCUS THEMES:

- Automation technologies
- Artificial intelligence
- Additive manufacturing
- Transparency and traceability
- Robotics



ALTERNATIVE PROTEINS

Substituting animal proteins with plant-based alternatives can significantly reduce the CO₂ emissions of the food system. Insect proteins and innovative fermentation technologies for protein production can also contribute to sustainable nutrition.

Extensive research activities and the implementation of technological innovations are required for the development and processing of alternative proteins. In addition, a greater emphasis should be placed on local agriculture for the production of plant proteins in order to establish a more regional and independent value chain.

OUR FOCUS THEMES:

- Plant-based proteins
- Insect proteins
- Functionalization of proteins
- Product development
- Processing methods and technologies

SUSTAINABILITY THROUGH INNOVATION

ENTREPRENEURSHIP

SOCIAL ACCEPTANCE
OF TECHNICAL INNOVATION



HEALTHY NUTRITION

As consumers become more aware of food, the production and marketing of healthy food will continue to be a focus of the food industry. Vegetarian and vegan diets play a particularly important role in this. Reducing sugar, fat and salt while maintaining the same taste experience and high quality also presents challenges for the food industry, which the LI Food can support through the networking and consultation of companies.

The LI Food will continue to exchange experiences with companies regarding Nutri-Score to drive the development of healthier foods.

OUR FOCUS THEMES:

- Balanced nutrition
- Support for the development of healthy food
- Corporate Social Responsibility (CSR)
- Nutritional competence
- Safe food

SUSTAINABILITY THROUGH INNOVATION

ENTREPRENEURSHIP

SOCIAL ACCEPTANCE
OF TECHNICAL INNOVATION

SOCIAL MEDIA



<https://www.youtube.com/channel/UCx308KCN6F9MGf6TADzvzNA>



https://twitter.com/_LIFOOD



https://www.instagram.com/_lifood/



<https://www.linkedin.com/showcase/li-food>



<https://www.li-food.de>





STATE INITIATIVE
FOR FOOD INDUSTRY
LOWER SAXONY

Headquarters



DIL Deutsches Institut für Lebensmitteltechnik e.V.
Prof.-von-Klitzing-Str. 7
49610 Quakenbrück

Tel. +49 (0)5431-183 135

Fax. +49 (0)5431-183 114

Email: info@li-food.de

Cooperation partner



Seedhouse Accelerator GmbH
Marie-Curie-Str. 3
49076 Osnabrück

Tel. +49 (0)160 954 536 30

Email: info@li-food.de



Niedersachsen